



Berlin

DUNE
UNIQUE MATTERS

Roca

Berlin

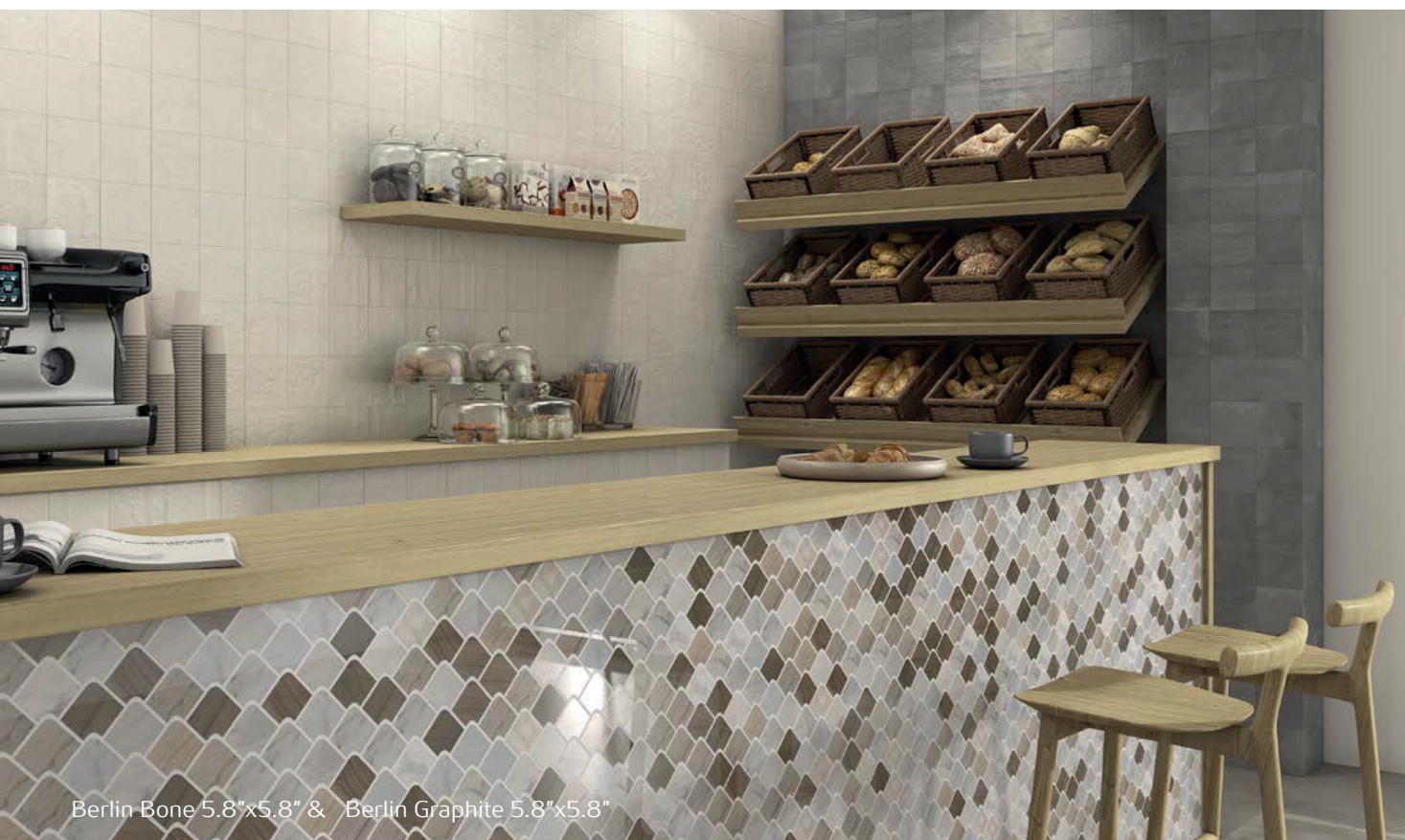
Berlin, the new collection where the concept of concrete has been re-imagined with countless products in a variety of sizes and colors and with various accessories to allow everyone to create unique-feeling spaces.



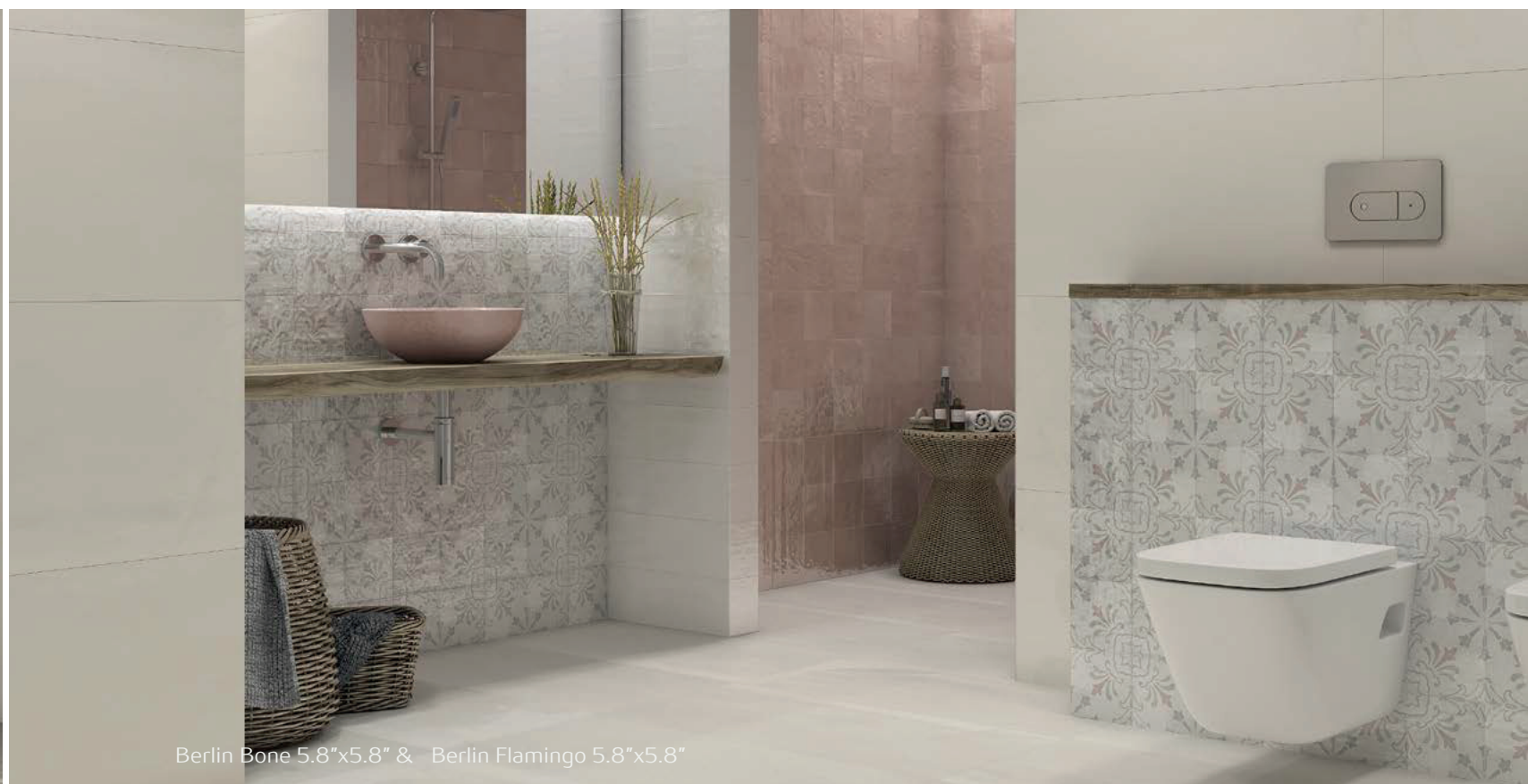
Berlin Aquamar 5.8"x5.8" & Berlin White 5.8"x5.8"



Berlin White Glossy 5.8"x5.8"



Berlin Bone 5.8"x5.8" & Berlin Graphite 5.8"x5.8"



Berlin Bone 5.8"x5.8" & Berlin Flamingo 5.8"x5.8"

Berlin Bright

Ceramic Wall & Glazed Porcelain

8mm  **5.8"x5.8"**
14.7x14.7 cm



White



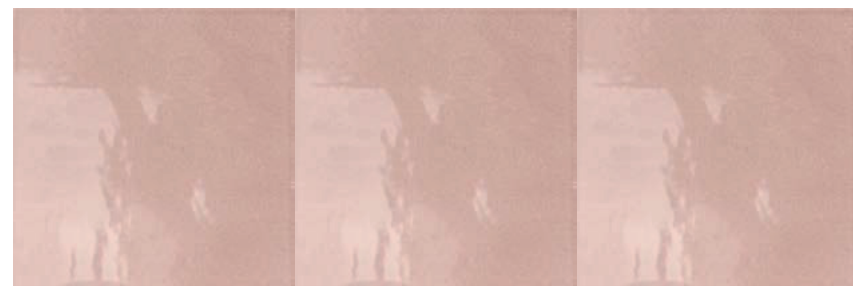
5.8"x5.8"
188047



Bone



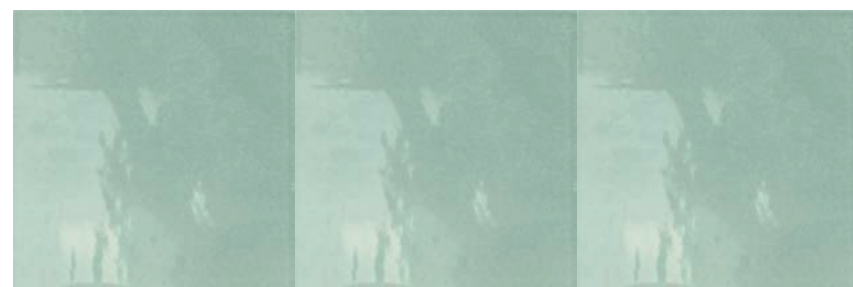
5.8"x5.8"
188043



Flamingo



5.8"x5.8"
188045



Aquamar



5.8"x5.8"
188046

Technical Specifications - White | Bone

CHARACTERISTICS	STANDARD	DECLARED ASTM
Dimensions	ISO 10545-2	± 0.5%
Water Absorption	ISO 10545-3	≤0.5% < E ≤ 3%
Resistance to Surface Abrasion	ISO 10545-7	CLASS 4
Chemical Resistance	ISO 10545-13	GLA
Flatness	ISO 10545-2	± 0.5%
Scratch Hardness	67-101	5
Crazing Resistance	ISO 10545-11	Accomplish
Resistance to Stains	ISO 10545-14	5
Chemical Resistance Swimmingpool	ISO 10545-13	GA
Slip Resistance	41901 EX	Class 0
Frost Resistance	ISO 10545-12	Accomplish
Resistance to Thermal Shock	ISO 10545-9	Accomplish
Breaking Strength	ISO 10545-4	≥125 lbf

Technical Specifications - Flamingo | Aquamar

CHARACTERISTICS	STANDARD	DECLARED ASTM
Dimensions	ISO 10545-2	± 0.5%
Water Absorption	ISO 10545-3	≤0.5% < E ≤ 3%
Resistance to Surface Abrasion	ISO 10545-7	CLASS 3
Chemical Resistance	ISO 10545-13	GLA
Flatness	ISO 10545-2	± 0.5%
Scratch Hardness	67-101	5
Crazing Resistance	ISO 10545-11	Accomplish
Resistance to Stains	ISO 10545-14	5
Chemical Resistance Swimmingpool	ISO 10545-13	GA
Slip Resistance	41901 EX	Class 0
Breaking Strength	ISO 10545-4:9	>30N/ mm ²
Frost Resistance	ISO 10545-12	Accomplish
Resistance to Thermal Shock	ISO 10545-9	Accomplish
Breaking Strength	ISO 10545-4	≥125 lbf

Packaging Info

Size	SF per carton	PC per carton	BX per pallet
5.8"x5.8"	498.15	44	70

Berlin Matte

Ceramic Wall & Glazed Porcelain

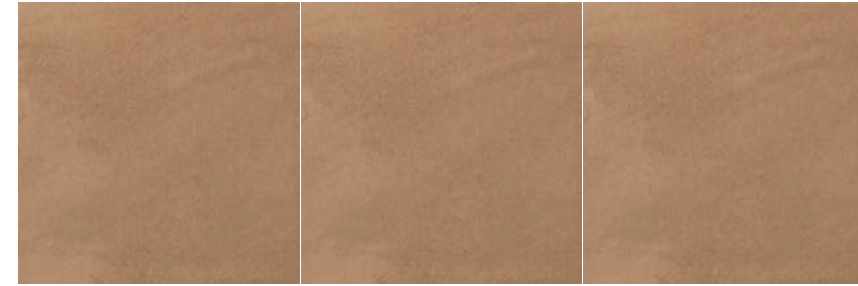
✦ 8mm  **5.8"x5.8"**
14.7x14.7 cm



White



5.8"x5.8"
188061



Terra



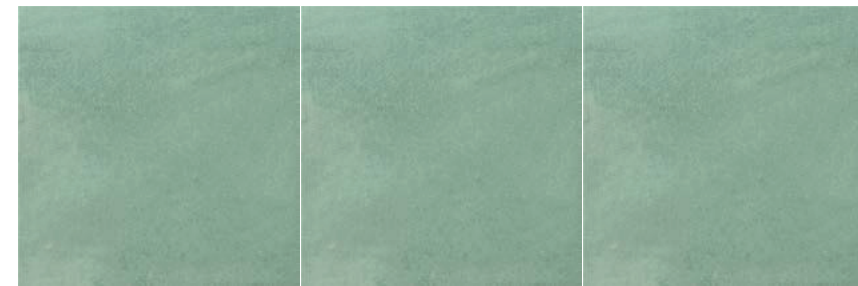
5.8"x5.8"
188065



Grey



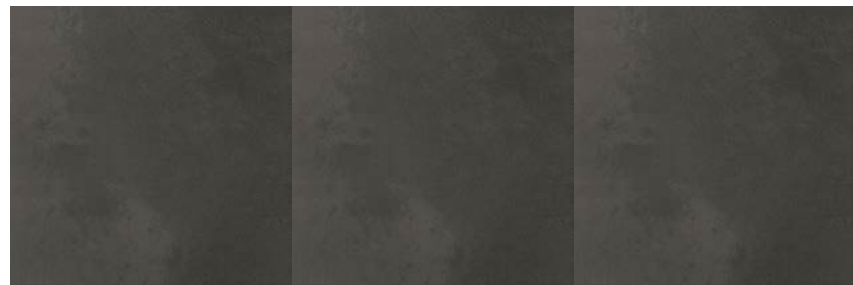
5.8"x5.8"
188062



Aquamar



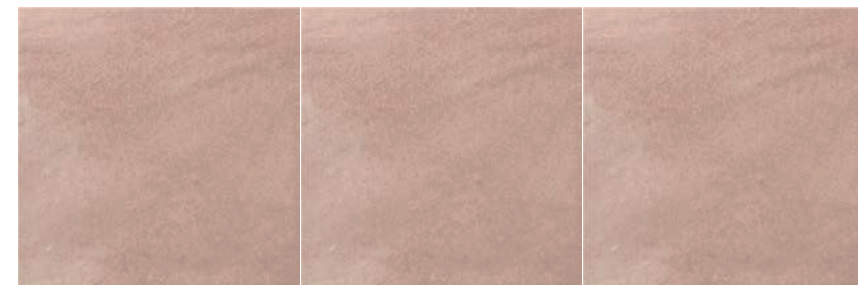
5.8"x5.8"
188066



Graphite



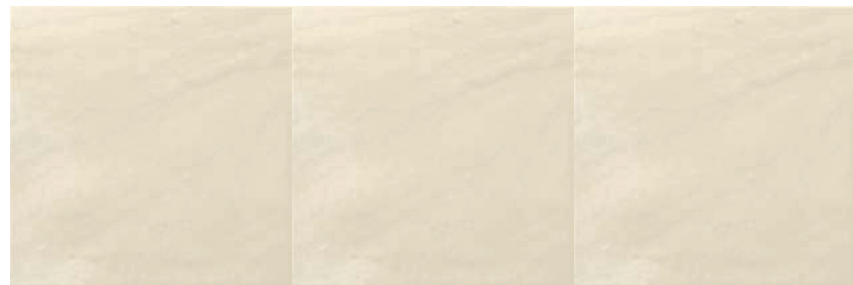
5.8"x5.8"
188063



Flamingo



5.8"x5.8"
188067



Bone



5.8"x5.8"
188064



Bambú



5.8"x5.8"
188075

Technical Specifications - Graphite

CHARACTERISTICS	STANDARD	DECLARED ASTM
Dimensions	ISO 10545-2	± 0.5%
Water Absorption	ISO 10545-3	E≤0.5%
Resistance to Surface Abrasion	ISO 10545-7	CLASS 2
Chemical Resistance	ISO 10545-13	GLA
Flatness	ISO 10545-2	± 0.5%
Scratch Hardness	67-101	6
Crazing Resistance	ISO 10545-11	Accomplish
Resistance to Stains	ISO 10545-14	5
Chemical Resistance Swimmingpool	ISO 10545-13	GA
Slip Resistance	41901 EX	Class 1
Frost Resistance	ISO 10545-12	Accomplish
Resistance to Thermal Shock	ISO 10545-9	Accomplish
Breaking Strength	ISO 10545-4	≥275 lbf

Technical Specifications - Grey | White

CHARACTERISTICS	STANDARD	DECLARED ASTM
Dimensions	ISO 10545-2	± 0.5%
Water Absorption	ISO 10545-3	E≤0.5%
Resistance to Surface Abrasion	ISO 10545-7	CLASS 4
Chemical Resistance	ISO 10545-13	GLA
Flatness	ISO 10545-2	± 0.5%
Scratch Hardness	67-101	6
Crazing Resistance	ISO 10545-11	Accomplish
Resistance to Stains	ISO 10545-14	5
Chemical Resistance Swimmingpool	ISO 10545-13	GA
Slip Resistance	41901 EX	Class 1
Frost Resistance	ISO 10545-12	Accomplish
Resistance to Thermal Shock	ISO 10545-9	Accomplish
Breaking Strength	ISO 10545-4	≥275 lbf

Technical Specifications - Flamingo

CHARACTERISTICS	STANDARD	DECLARED ASTM
Dimensions	ISO 10545-2	± 0.5%
Water Absorption	ISO 10545-3	E≤3%
Resistance to Surface Abrasion	ISO 10545-7	CLASS 3
Chemical Resistance	ISO 10545-13	GLA
Flatness	ISO 10545-2	± 0.5%
Scratch Hardness	67-101	6
Crazing Resistance	ISO 10545-11	Accomplish
Resistance to Stains	ISO 10545-14	5
Chemical Resistance Swimmingpool	ISO 10545-13	GA
Slip Resistance	41901 EX	Class 1
Frost Resistance	ISO 10545-12	Accomplish
Resistance to Thermal Shock	ISO 10545-9	Accomplish
Breaking Strength	ISO 10545-4	≥275 lbf

Technical Specifications - Terra | Bone | Aquamar

CHARACTERISTICS	STANDARD	DECLARED ASTM
Dimensions	ISO 10545-2	± 0.5%
Water Absorption	ISO 10545-3	E≤0.5%
Resistance to Surface Abrasion	ISO 10545-7	CLASS 3
Chemical Resistance	ISO 10545-13	GLA
Flatness	ISO 10545-2	± 0.5%
Scratch Hardness	67-101	6
Crazing Resistance	ISO 10545-11	Accomplish
Resistance to Stains	ISO 10545-14	5
Chemical Resistance Swimmingpool	ISO 10545-13	GA
Slip Resistance	41901 EX	Class 1
Frost Resistance	ISO 10545-12	Accomplish
Resistance to Thermal Shock	ISO 10545-9	Accomplish
Breaking Strength	ISO 10545-4	≥275 lbf

Packaging Info

Size	SF per carton	PC per carton	BX per pallet
5.8"x5.8"	498.15	44	70